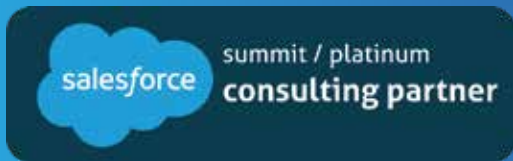


MIGRATE FROM ORACLE COMMERCE TO SALESFORCE B2B/B2D COMMERCE



20+
Years of Experience



500+
Satisfied Customers



1800+
Employees Worldwide

Why Migrate Now?

The Future of Commerce is Agile, Connected, and Cloud-Based

Oracle Commerce (ATG) served as a powerful platform in its time. But with growing customer expectations, evolving digital demands, and the need for tight CRM-commerce alignment, enterprises are shifting to modern cloud-native platforms like Salesforce B2B Commerce.



Legacy platform complexity and high maintenance costs



Limited integration with modern tools (CRM, CPQ, ERP)



Growing demand for self-service and mobile-first experiences



Need for real-time customer personalization



Scalability for future growth and global expansion

Why Salesforce B2B/D2C Commerce?



Built-in B2B capabilities (account-based pricing, contract management, reorders)



Seamless CRM and ERP integrations



Low-code/no-code personalization



Cloud-native performance and scalability



Future-ready with automatic updates and seasonal releases

Salesforce B2B Commerce – A Future-Ready Platform

Built on Salesforce. Designed for B2B Excellence.

Platform Advantages

Customer 360 View: Leverage CRM data to tailor buying experiences

Out-of-the-Box B2B Features: Account-based pricing, reorders, contract pricing, quotes

Cloud-Native Scalability: Rapid innovation with Salesforce seasonal releases

Connected Ecosystem: Integrates seamlessly with Salesforce CPQ, Service Cloud, Marketing Cloud, and MuleSoft

Self-Service Enablement: Empower buyers with account portals, order history, and product discovery tools

AI-Driven Recommendations: Use Einstein AI to personalize products and promotions

AI Agent: Personalize shopping experience with Agentforce

salesforce

FREE 2 Weeks Pre-Migration Discovery

To address any of your existing Salesforce-related challenges & business needs.

Objectives of Discovery Phase

- ✓ Understand current Adobe Commerce setup (catalog, pricing, checkout, custom modules).
- ✓ Map core features and customizations to Salesforce B2B/D2C capabilities.
- ✓ Define integration points (ERP, payment gateway, shipping providers, etc.).
- ✓ Identify business workflows unique to the current B2B/D2C implementation.
- ✓ Assess data quality and readiness for migration (products, customers, orders).
- ✓ Identify technical and organizational risks.

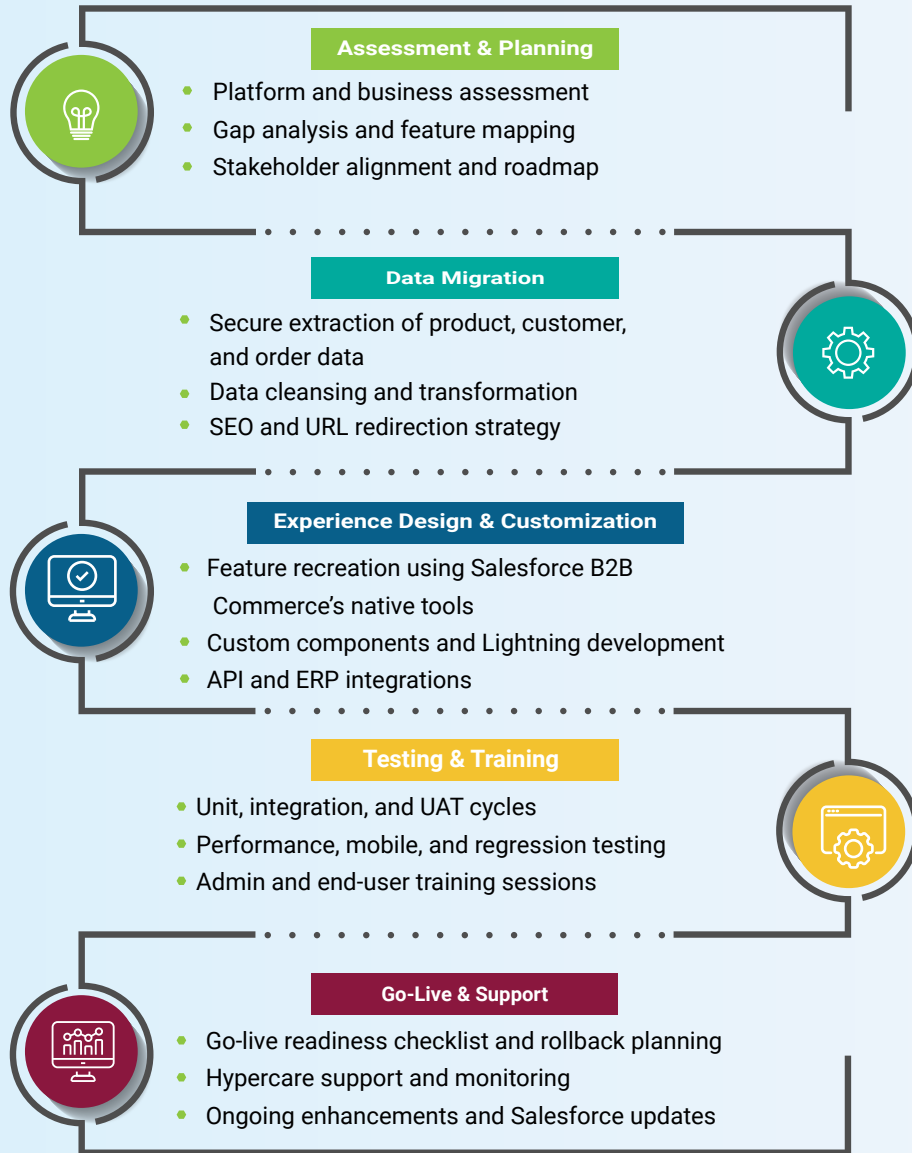
Outcome of Discovery

- ✓ Clear migration plan with phased approach
- ✓ Risk areas identified and mitigation strategies defined
- ✓ Prioritized features for MVP and future roadmap
- ✓ Technical architecture blueprint drafted
- ✓ Estimated timeline and effort for full migration

Our Proven Migration Process

A Step-by-Step Approach to Minimize Risk and Maximize Value

Process Overview



Value-Driven Benefits

See the Impact: Faster, Smarter, Scalable B2B Commerce



Lower Total Cost of Ownership: Reduced infrastructure and upgrade costs



Faster Time-to-Market: Deploy new features in weeks, not months



Enhanced Personalization: Use customer data for targeted experiences



Streamlined Operations: Unified platform for sales, service, and commerce



Increased Conversion Rates: Mobile-first and intuitive self-service buying



Future-Proof Infrastructure: Constant innovation with Salesforce updates

Customer Satisfaction is Our Priority



An American Instrumentation company specializing in thermocoupling & technically advanced products

“The data looks Fantastic! Keep up the good work! Great job team. Appreciate all the hard work that went into completing this effort.”

Michael Ali



Rock West Composites offers customers with stock products, rapid development, and globally-competitive production

“I want to give a big thumbs to our integration partner Royal Cyber for helping us integrate Salesforce Commerce Cloud, Order Management and NetSuite.”

Jose Luis Sanchez



Capitol Lighting is a leading provider for lighting and home furnishings, offering a world-class assortment of lighting

“Royal Cyber has been a pleasure to work with providing thought-leadership and exceptional project teams. They provided quality work by delivering projects on time and on budget.”

Brian Lebersfeld



Retail clothing chain known for its signature jeans in premium denim, plus activewear & accessories.

“I want to congratulate you on the excellent work you've done in getting the research to production. Thank you all for the combined and professional work to make this is one a great success.”

Muthu Balu



YDesign Group is the leading online destination for modern and contemporary design lighting and furniture.

“Thank you all for your hard work in getting the redesign completed. The site looks great! This is a great foundation to get our branding communicated to our customers!”

Melissa Howe

We're Proud of Our Relationships

YDesignGroup

Indigo

Capitol
Lighting

Syndigo



TRUE RELIGION

DWYEROMEGA

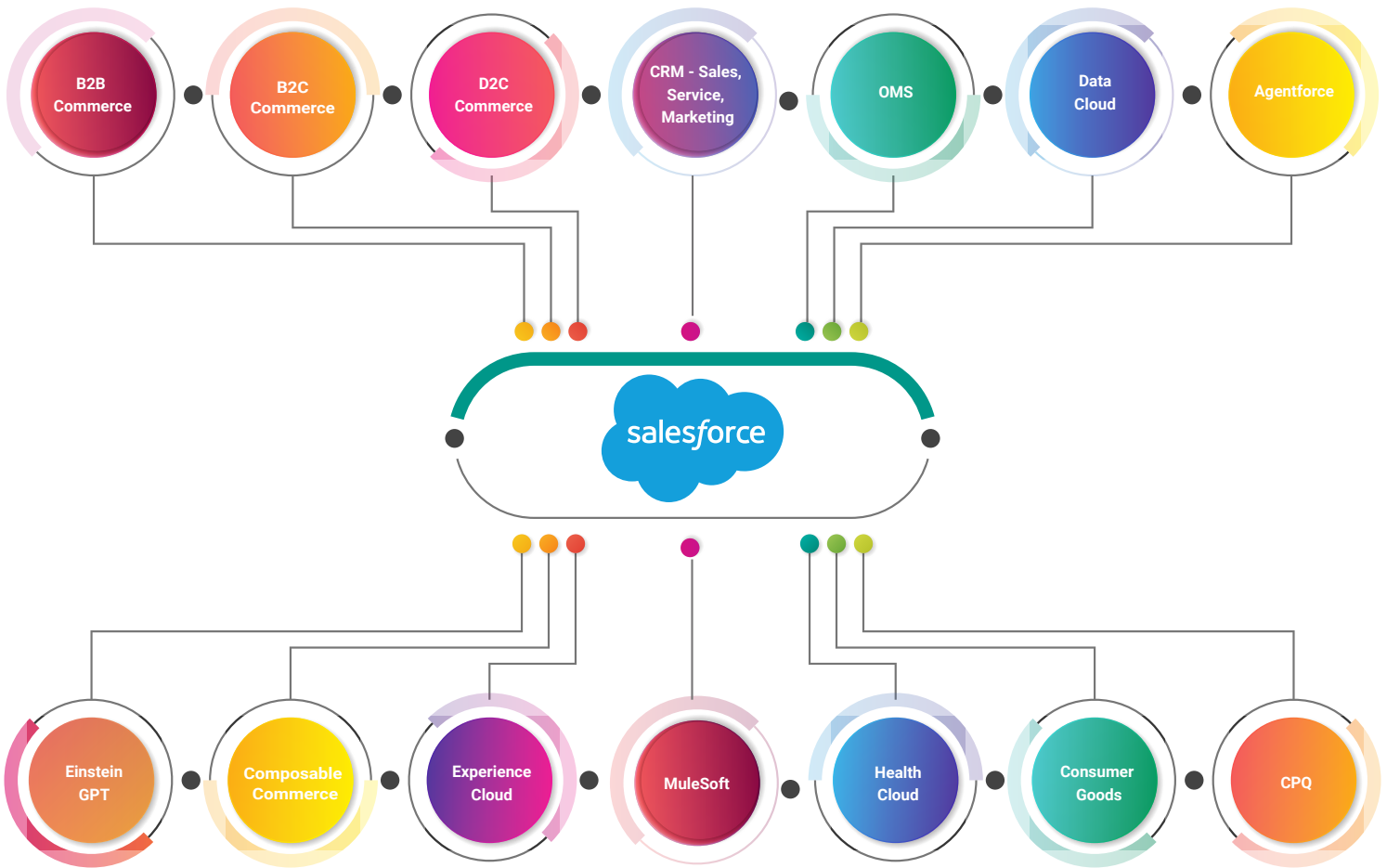
S&P Global

Rock West
COMPOSITES

Salesforce AppExchange Customer Satisfaction Ratings

★★★★★ 4.8/5.0

Royal Cyber's Salesforce Area of Focus & Expertise



salesforce

Connect with us

FREE 2 Weeks Pre-Migration Discovery

To address any of your existing Salesforce-related challenges & business needs.